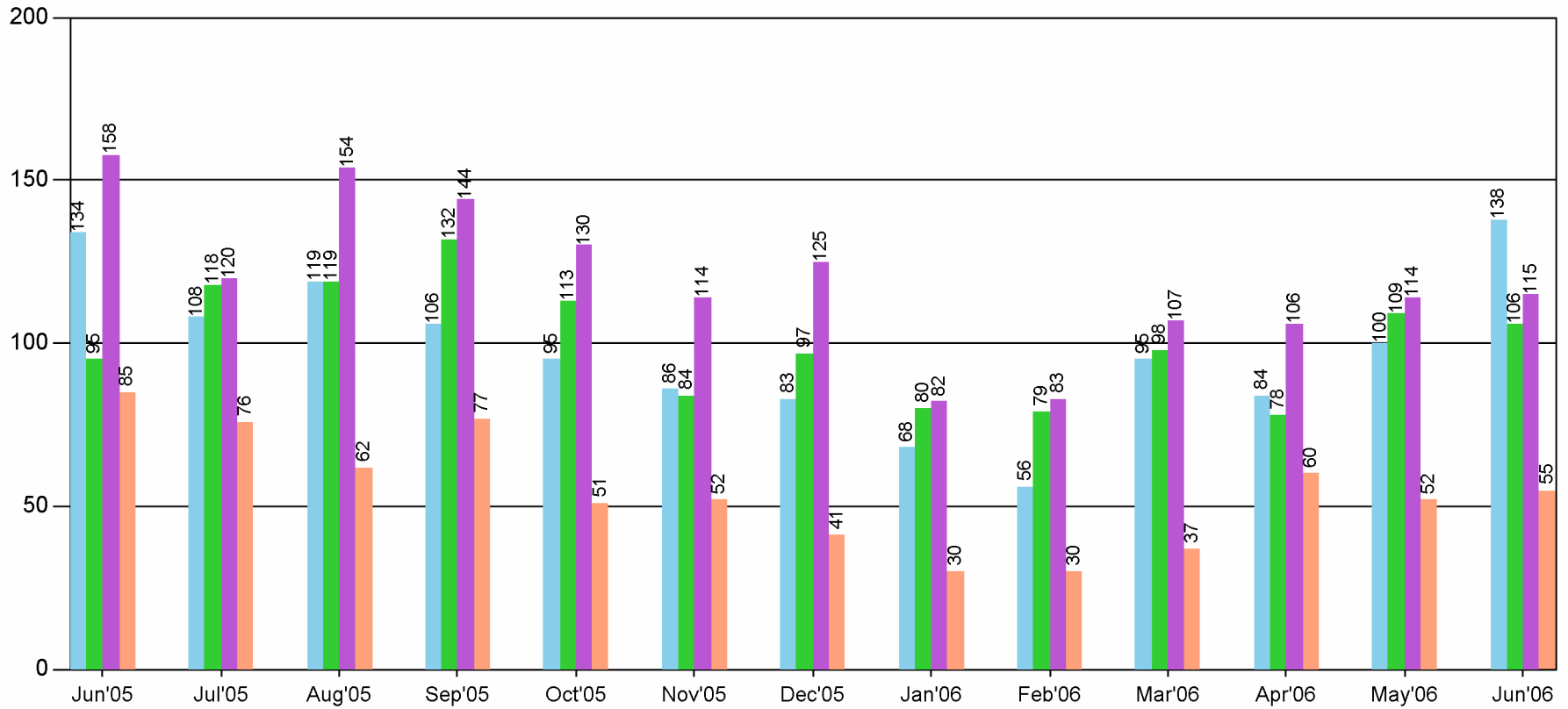
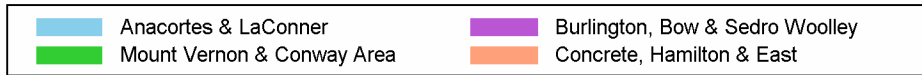




EAGLE EYE

Source: Real Estate Digest/County Auditor

Closed Sales from June of 2005 in Skagit County.



Month	Total Transactions	Volume
Jun'05	472	116,625,139
Jul'05	422	101,947,198
Aug'05	454	111,625,397
Sep'05	459	109,188,020
Oct'05	389	122,535,250
Nov'05	336	82,035,627
Dec'05	346	103,894,506
Jan'06	260	74,190,663
Feb'06	248	168,840,826
Mar'06	337	126,358,355
Apr'06	328	126,651,123
May'06	375	116,267,805
Jun'06	414	137,376,206



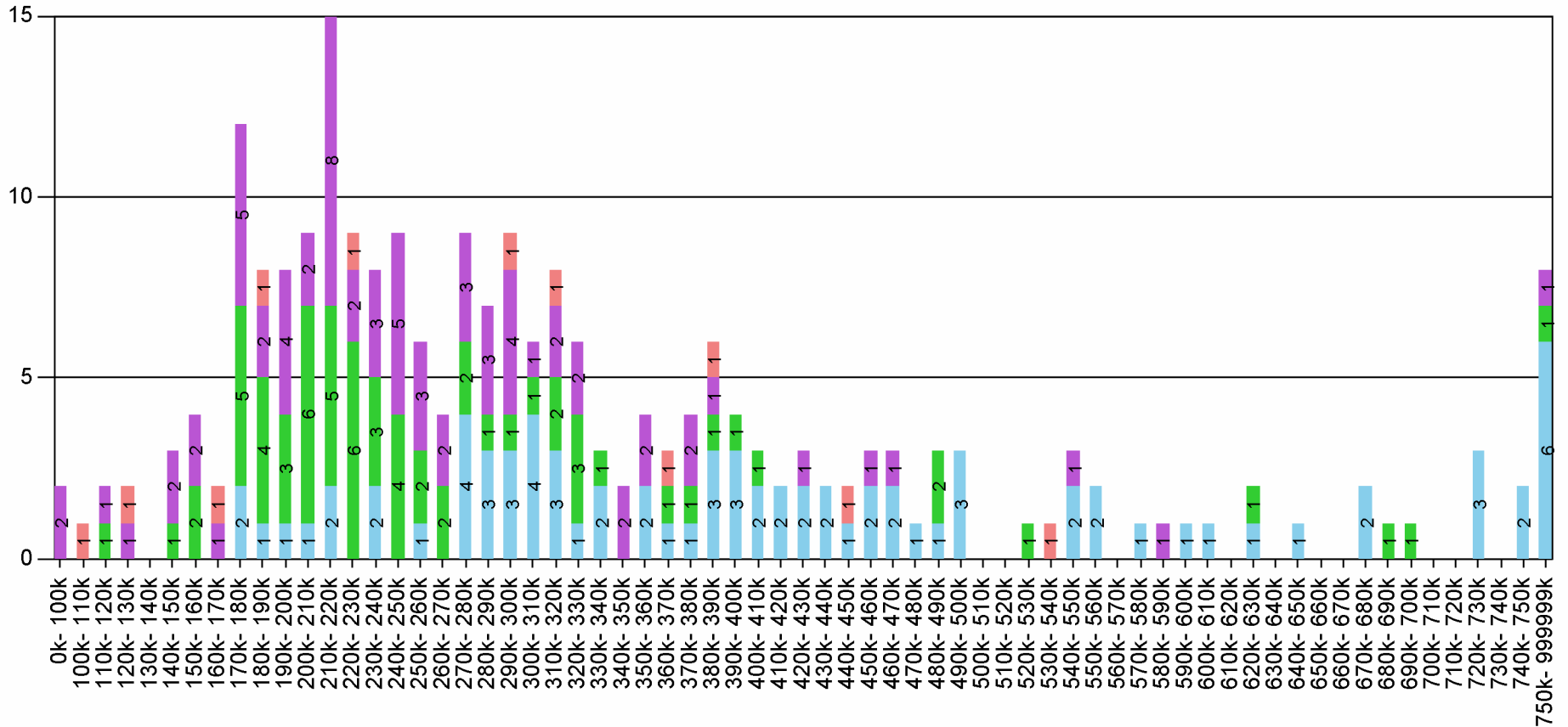
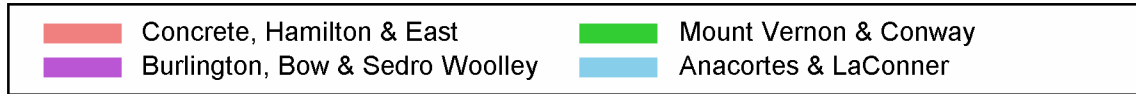
First American Title

Company of Skagit County

formerly Skagit County Title Company

PO BOX 1667 1301 Riverside Drive, Suite B Mount Vernon WA 98273 Title: (360) 424-0115 Escrow: (360) 424-0111 Fax: (360) 424-5885

Closed Sales for June of 2006 in Skagit County.



	410000 420000			420000 430000			430000 440000			440000 450000			450000 460000			460000 470000			470000 480000			480000 490000		
	NSF	USF	CDO	NSF	USF	CDO	NSF	USF	CDO	NSF	USF	CDO	NSF	USF	CDO	NSF	USF	CDO	NSF	USF	CDO	NSF	USF	CDO
Anacortes & LaConner		1	1	1	1			2			1			2			2			1		1		
Mount Vernon & Conway																							2	
Burlington, Bow & Sedro Woolley				1									1				1							
Concrete, Hamilton & East										1														
	490000 500000			500000 510000			510000 520000			520000 530000			530000 540000			540000 550000			550000 560000			560000 570000		
	NSF	USF	CDO	NSF	USF	CDO	NSF	USF	CDO	NSF	USF	CDO	NSF	USF	CDO	NSF	USF	CDO	NSF	USF	CDO	NSF	USF	CDO
Anacortes & LaConner	1	2														2				1	1			
Mount Vernon & Conway										1														
Burlington, Bow & Sedro Woolley																1								
Concrete, Hamilton & East													1											
	570000 580000			580000 590000			590000 600000			600000 610000			610000 620000			620000 630000			630000 640000			640000 650000		
	NSF	USF	CDO	NSF	USF	CDO	NSF	USF	CDO	NSF	USF	CDO	NSF	USF	CDO	NSF	USF	CDO	NSF	USF	CDO	NSF	USF	CDO
Anacortes & LaConner			1					1				1					1							1
Mount Vernon & Conway																1								
Burlington, Bow & Sedro Woolley				1																				
Concrete, Hamilton & East																								
	650000 660000			660000 670000			670000 680000			680000 690000			690000 700000			700000 710000			710000 720000			720000 730000		
	NSF	USF	CDO	NSF	USF	CDO	NSF	USF	CDO	NSF	USF	CDO	NSF	USF	CDO	NSF	USF	CDO	NSF	USF	CDO	NSF	USF	CDO
Anacortes & LaConner									2															3
Mount Vernon & Conway										1			1											
Burlington, Bow & Sedro Woolley																								
Concrete, Hamilton & East																								
	730000 740000			740000 750000			750000 999999999																	
	NSF	USF	CDO	NSF	USF	CDO	NSF	USF	CDO															
Anacortes & LaConner					2		1	4	1															
Mount Vernon & Conway								1																
Burlington, Bow & Sedro Woolley								1																
Concrete, Hamilton & East																								