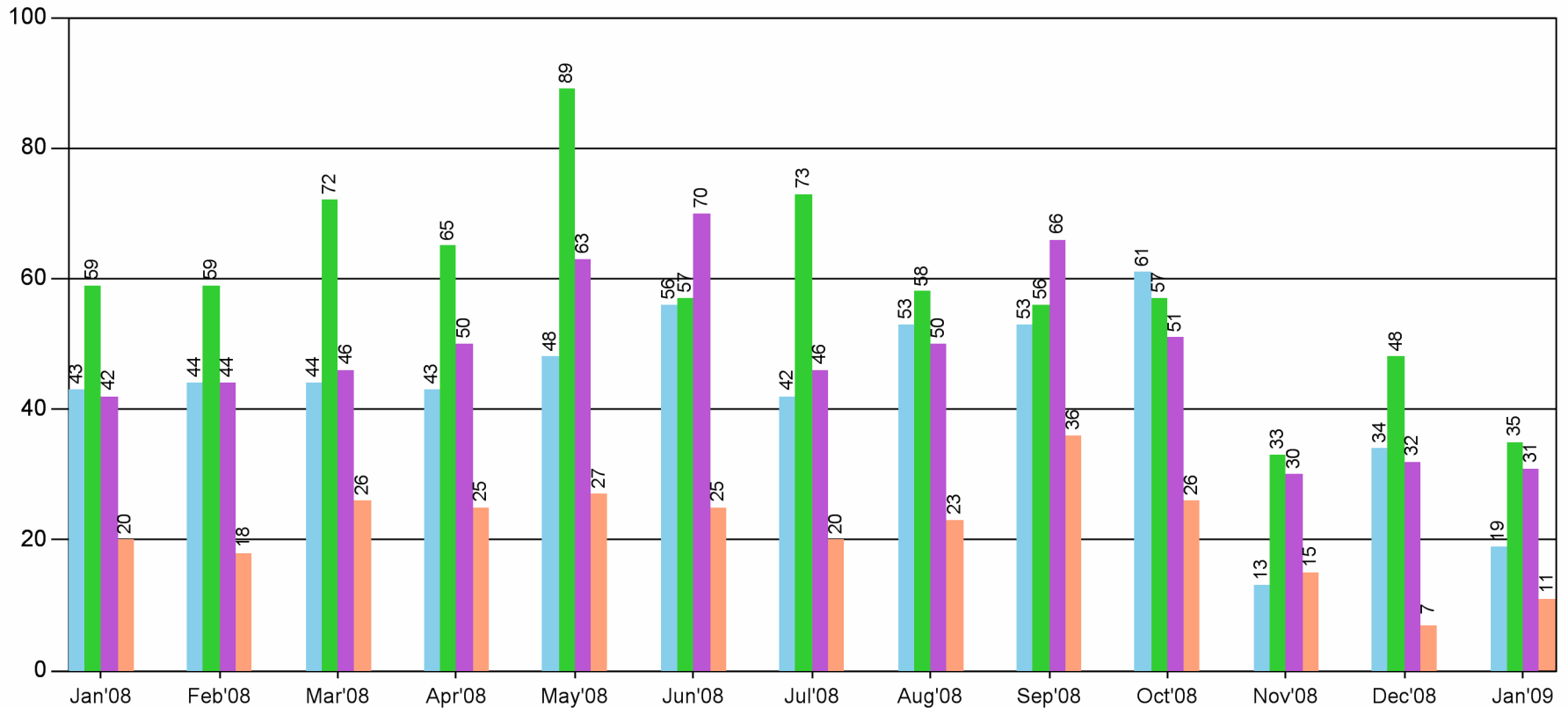




The Lion's Ledger

Guardian Northwest Title & Escrow, Formerly First American Title Since 1970

Closed Sales from January of 2008 in Skagit County.



Total	164	165	188	183	227	208	181	184	211	195	91	121	96
Volume	56,957,497	57,631,398	60,604,369	48,682,089	66,817,862	64,912,297	51,034,864	47,861,296	59,897,856	68,409,668	101,027,680	50,900,617	35,718,813

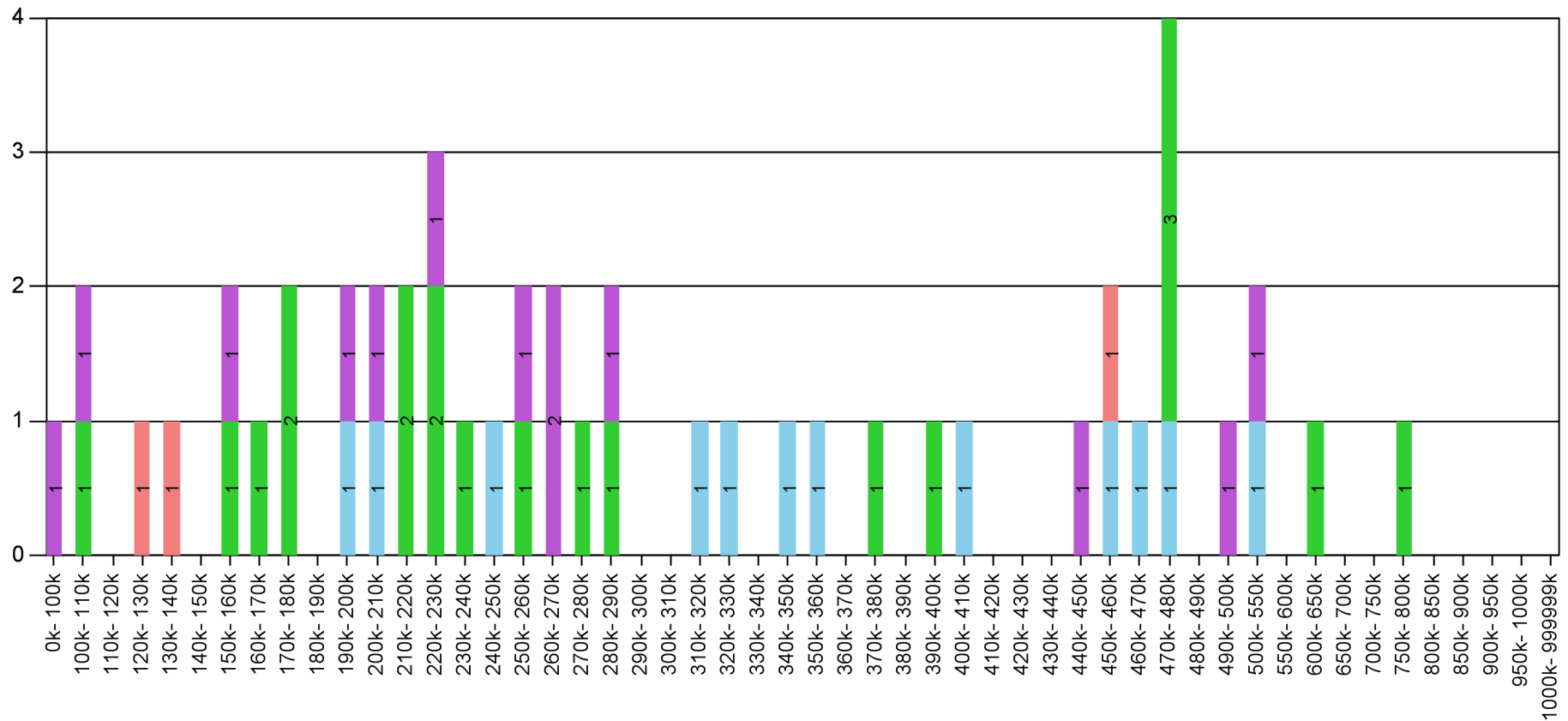


The Lion's Ledger

Guardian Northwest Title & Escrow, Formerly First American Title Since 1970

PO BOX 1667 1301 Riverside Drive, Suite B Mount Vernon WA 98273 Title: (360) 424-0115 Escrow: (360) 424-0111 Fax: (360) 424-5885

Closed Sales for January of 2009 in Skagit County.



Closed Sales for January of 2009 in Skagit County.

NSF= New Single Family USF= Used Single Family CDO= Residential Condo

	0 100000			100000 110000			110000 120000			120000 130000			130000 140000			140000 150000			150000 160000			160000 170000		
	NSF	USF	CDO	NSF	USF	CDO	NSF	USF	CDO	NSF	USF	CDO	NSF	USF	CDO	NSF	USF	CDO	NSF	USF	CDO	NSF	USF	CDO
Anacortes & LaConner																								
Mount Vernon & Conway				1															1				1	
Burlington, Bow & Sedro Woolley	1			1															1					
Concrete, Hamilton & East									1			1												
	170000 180000			180000 190000			190000 200000			200000 210000			210000 220000			220000 230000			230000 240000			240000 250000		
Anacortes & LaConner								1				1												1
Mount Vernon & Conway		2											2			1		1		1				
Burlington, Bow & Sedro Woolley							1				1						1							
Concrete, Hamilton & East																								
	250000 260000			260000 270000			270000 280000			280000 290000			290000 300000			300000 310000			310000 320000			320000 330000		
Anacortes & LaConner																				1				1
Mount Vernon & Conway		1						1		1														
Burlington, Bow & Sedro Woolley			1		2						1													
Concrete, Hamilton & East																								
	330000 340000			340000 350000			350000 360000			360000 370000			370000 380000			380000 390000			390000 400000			400000 410000		
Anacortes & LaConner				1				1																1
Mount Vernon & Conway													1							1				
Burlington, Bow & Sedro Woolley																								
Concrete, Hamilton & East																								
	410000 420000			420000 430000			430000 440000			440000 450000			450000 460000			460000 470000			470000 480000			480000 490000		
Anacortes & LaConner														1		1				1				
Mount Vernon & Conway																			2	1				
Burlington, Bow & Sedro Woolley											1													
Concrete, Hamilton & East													1											

	490000 500000			500000 550000			550000 600000			600000 650000			650000 700000			700000 750000			750000 800000			800000 850000					
	NSF	USF	CDO	NSF	USF	CDO	NSF	USF	CDO	NSF	USF	CDO	NSF	USF	CDO	NSF	USF	CDO	NSF	USF	CDO	NSF	USF	CDO			
Anacortes & LaConner				1																							
Mount Vernon & Conway											1									1							
Burlington, Bow & Sedro Woolley	1				1																						
Concrete, Hamilton & East																											
	850000 900000			900000 950000			950000 1000000			1000000 999999999																	
	NSF	USF	CDO	NSF	USF	CDO	NSF	USF	CDO	NSF	USF	CDO															
Anacortes & LaConner																											
Mount Vernon & Conway																											
Burlington, Bow & Sedro Woolley																											
Concrete, Hamilton & East																											

Agents For
First American Title Insurance Company